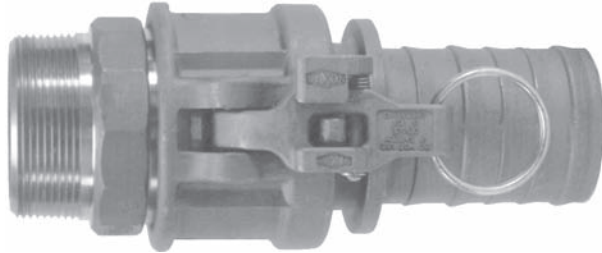


EZ Boss-Lock

No more fumbling with clamps, wire, clips or pins.
Just close the handles and the locking
mechanism is engaged.

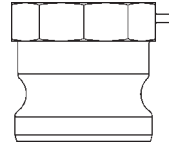


Unlike other safety couplings . . .

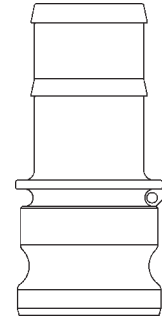
- *The EZ Boss-Lock is extremely easy to open!!!*
The release lever is under your thumb when you want to open the fitting. Ergonomic.
- *The EZ Boss-Lock is resistant to accidental disconnection when being dragged.* The release lever opens in the direction opposite to the cam arm, so movements that tend to open the release lever also tend to close the cam arm!!!
- *The EZ Boss-Lock alerts you if it is not properly engaged.* If the rotating lever is not flush with the handle, it is not properly engaged.
- *The EZ Boss-Lock has no sliding pins to jam.*
The EZ Boss-Lock's rotating action helps keep the locking device free of debris.
- *The EZ Boss-Lock has no sliding pins to pop open.*
The EZ Boss-Lock is designed to protect critical parts from impact and to withstand rugged use.
- *The EZ Boss-Lock can be supplied with special shanks custom suited to your needs.* The EZ Boss-Lock is available with swaged and PF shank designs for hard to couple chemical hoses.
- *The EZ Boss-Lock cam arm assemblies are made of investment cast stainless steel with plated carbon steel pull rings.*
- *The EZ Boss-Lock is easier to insert into the hose tubes on tank trucks, and easier to use in restricted spaces.* This is due to the smaller maximum OD and a more snag free exterior.
- *The EZ Boss-Lock cam arm assemblies can be retrofitted onto undamaged stainless steel Boss-Lock.* This allows you to protect your investment in stainless steel Boss-Lock couplings while you upgrade.
- *The EZ Boss-Lock is made in the USA.*

Cam and Groove Line Drawings

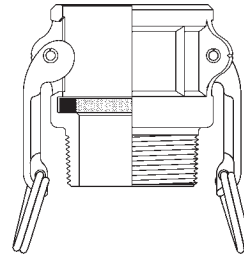
Line drawings are representative of the Dixon line of cam and groove.



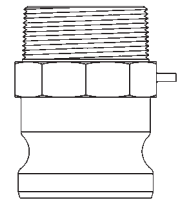
Type A
male adapter x female NPT



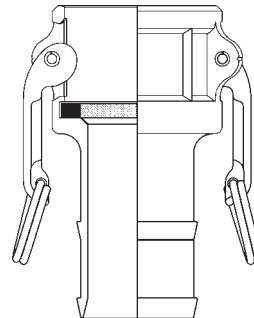
Type E
male adapter x hose shank



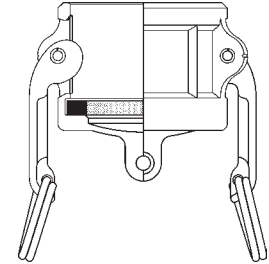
Type B
female coupler x male NPT



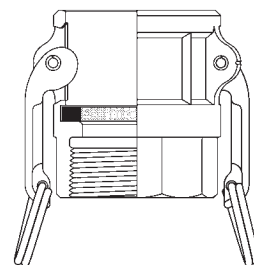
Type F
male adapter x male NPT



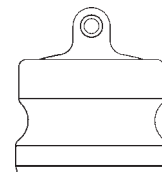
Type C
female coupler x hose shank



Type DC *
dust cap



Type D
female coupler x female NPT



Type DP *
dust plug

* Dust caps and dust plugs are **not** to be used in pressure applications for safety and environmental reasons.

Warning !

Under no circumstances should cam and groove couplings be used for compressed air or steam service!

**SAFETY
ALERT**

Boss-Lock PF Cam and Groove



female coupler x PF hose shank

- The shank design on these fittings was developed specifically for chemical transport hoses having Crosslinked Polyethylene (XLPE) or Ultra High Molecular Weight Polyethylene (UHMW) tubes, where shank retention can be a problem when using conventional band clamps. In testing tank transport hoses from a wide variety of manufacturers, the Boss-Lock-PF fitting showed significant improvement in hose coupling retention over the conventional cam and groove shank design.
- Other sizes are available on special order. Consult the factory for pricing and availability.
- For best results we recommend the use of 3/4" wide band clamps found on pages 312 and 313.

type C coupler x special hose shank

Size	Stainless Steel		Opt Qty
	Part #	Price/E	
2"	RC200EZPF	\$159.00	10
3"	RC300EZPF	225.00	5



male adapter x PF hose shank

type E adapter x special hose shank

Size	Stainless Steel		Opt Qty
	Part #	Price/E	
2"	RE200PF	\$96.30	10

Cam and Groove Hydrant Adapters



female NST x male adapter

- Pin lugs allow for easy connection using standard spanner and hydrant wrenches (pages 432 and 433).

Female NST Thread	Male Adapter	Brass		Aluminum	
		Part #	Price/E	Part #	Price/E
1½"	1½"	HA1515ADP	\$75.50	AHA1515ADP	\$34.65
2½"	2½"	HA2525ADP	83.30	AHA2525ADP	43.25