

Flat Seal Boss-Lock Cam and Groove Assemblies

- Flat Seal couplings are for lay flat hose with a wall thickness between 5/64" - 3/16".
- See page 410 for additional Flat Seal coupling assemblies.
- includes clamp
- *maximum recommended torque 40 ft./lbs*

SAFETY
ALERT



flat seal Boss-Lock coupler

Size	Aluminum	
	Part #	Price/E
6"	FSAC600 *	\$322.40



flat seal Boss-Lock adapter

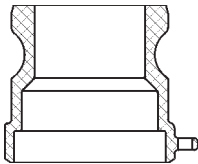
Size	Aluminum	
	Part #	Price/E
6"	FSAE600 *	\$318.00

* items will be discontinued as inventory is depleted

Dixon Adapters for Welding

- not all configurations are stocked
 - EZ Boss-Lock versions are also available. Consult the factory for pricing and availability.
 - Line drawings are for reference only. Consult the factory for specific dimensions.
 - Final weld preparation, as with all weld fittings, is the responsibility of the welder.
- ¹ Dixon and Boss-Lock cam and groove couplings *do not interchange in the 8" size*.
The 8" Dixon design has 4 cam arms.

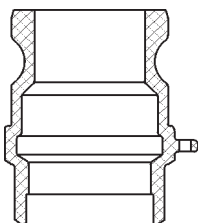
SAFETY
ALERT



socket weld to schedule 40 pipe

Size	Bore	Aluminum		Stainless Steel	
		Part #	Price/E	Part #	Price/E
¾"	1.065	---	---	75AWSPSS	\$96.80
1"	1.330	---	---	100AWSPSS	97.95
1½"	1.915	150AWSPAL	\$55.50	150AWSPSS	112.80
2"	2.390	200AWSPAL	44.30	200AWSPSS	107.00
3"	3.530	300AWSPAL	56.90	300AWSPSS	181.55
4"	4.530	400AWSPAL	74.75	400AWSPSS	272.00
5"	5.593	500AWSPAL	115.60	500AWSPSS	437.10
6"	6.655	600AWSPAL	131.10	600AWSPSS	461.00
8" DIX ¹	8.711	800AWSPAL	461.60	---	---
8" BL ¹	8.711	801AWSPAL	440.00	---	---

butt weld to schedule 40 pipe / socket weld to nominal OD tubing



Size	Bore	Aluminum		Stainless Steel	
		Part #	Price/E	Part #	Price/E
¾"	.765	---	---	75AWBPSTSS	\$96.80
1"	1.015	---	---	100AWBPSTSS	97.95
1½"	1.515	150AWBPSTAL	\$49.40	150AWBPSTSS	112.50
2"	2.015	200AWBPSTAL	37.40	200AWBPSTSS	107.00
3"	3.015	300AWBPSTAL	56.00	300AWBPSTSS	181.55
4"	4.015	400AWBPSTAL	74.75	400AWBPSTSS	272.00
5"	5.015	500AWBPSTAL	115.60	500AWBPSTSS	437.10
6"	6.020	600AWBPSTAL	129.85	600AWBPSTSS	461.00
8" BL ¹	8.035	801AWBPSTAL	440.00	---	---