

Polypropylene Cam and Groove Adapters

SAFETY
ALERT

NOT recommended for use with Teflon® gaskets

- recommended for a maximum working pressure of **125 PSI** (½" - 1"), **100 PSI** (1¼" - 2") and **75 PSI** (3" - 4"); recommendations based on the use of mating Dixon fittings at an ambient temperature of **70°F** with standard seal installed
- ½" couplers and adapters will interchange with ¾" couplers and adapters. Only the threads and barbs are ½".
- 1¼" couplers and adapters will interchange with 1½" couplers and adapters. Only the threads and barbs are 1¼".
- Polypropylene cam and groove should not be mixed with aluminum fittings.
- Adapters are manufactured from a glass-filled polypropylene.

SAFETY
ALERT

¹ Dust caps and dust plugs are not to be used in pressure applications for safety and environmental reasons.

SAFETY
ALERT

type A



female NPT x male adapter

Size	Polypropylene		Opt Qty
	Part #	Price/E	
¾" x ½"	PPA50	\$4.90	24
¾"	PPA75	4.90	24
1"	PPA100	5.35	24
1½" x 1¼"	PPA125	5.50	24
1½"	PPA150	5.95	24
2"	PPA200	7.05	24
3"	PPA300	15.75	24
4"	PPA400	25.90	8



male NPT x male adapter

type F

Size	Polypropylene		Opt Qty
	Part #	Price/E	
¾" x ½"	PPF50	\$5.40	24
¾"	PPF75	5.40	24
1"	PPF100	6.10	24
1½" x 1¼"	PPF125	6.15	24
1½"	PPF150	6.20	24
2"	PPF200	8.15	24
3"	PPF300	20.10	24
4"	PPF400	25.90	8

type E



hose shank x male adapter

Size	Polypropylene		Opt Qty
	Part #	Price/E	
¾" x ½"	PPE50	\$5.40	24
¾"	PPE75	5.40	24
1"	PPE100	6.10	24
1½" x 1¼"	PPE125	6.15	24
1½"	PPE150	6.20	24
2"	PPE200	8.15	24
3"	PPE300	20.10	24
4"	PPE400	25.90	8



dust plug¹

type P¹

Size	Polypropylene		Opt Qty
	Part #	Price/E	
¾"	PPP75	\$4.90	24
1"	PPP100	5.35	24
1½"	PPP150	5.90	24
2"	PPP200	7.90	24
3"	PPP300	15.75	24
4"	PPP400	20.60	8

Polypropylene Adapter Elbows

- recommended for a maximum working pressure of **100 PSI** (1½" - 2"); recommendations based on the use of mating Dixon fittings at an ambient temperature of **70°F** with standard seal installed.
- Adapter elbows are manufactured from a glass-filled polypropylene.
- For use at elevated temperatures or other unusual operating conditions, consult factory.

SAFETY
ALERT



male adapter x female NPT

Size	Polypropylene		Opt Qty
	Part #	Price/E	
1½"	90PPA150	\$9.80	24
2"	90PPA200	10.45	24



male adapter x male NPT

Size	Polypropylene		Opt Qty
	Part #	Price/E	
1½"	90PPF150	\$11.35	24
2"	90PPF200	11.85	24

Cam & Groove Fittings

Polypropylene Cam and Groove Couplers

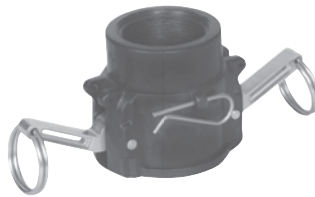
NOT recommended for use with Teflon® gaskets

SAFETY
ALERT

- recommended for a maximum working pressure of **125 PSI** (½" - 1"), **100 PSI** (1¼" - 2") and **75 PSI** (3" - 4"); recommendations based on the use of mating Dixon fittings at an ambient temperature of **70°F** with standard seal installed.
- ½" couplers and adapters will interchange with ¾" couplers and adapters. Only the threads and barbs are ½".
1¼" couplers and adapters will interchange with 1½" couplers and adapters. Only the threads and barbs are 1¼".
- Polypropylene cam and groove should not be mixed with aluminum fittings. **SAFETY ALERT**
- supplied with EPDM gaskets, 304 stainless steel handles and pins
- Couplers are manufactured from a glass-filled polypropylene.

¹ Dust caps and dust plugs are not to be used in pressure applications for safety and environmental reasons. **SAFETY ALERT**² 4" coupler has 3 handles**type D**

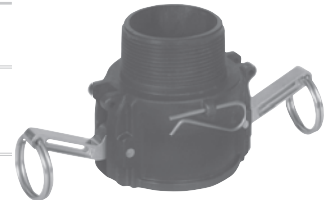
Size	Polypropylene		Opt Qty
	Part #	Price/E	
¾" x ½"	PPD50	\$13.25	24
¾"	PPD75	13.25	24
1"	PPD100	15.15	24
1½" x 1¼"	PPD125	18.10	24
1½"	PPD150	17.95	24
2"	PPD200	21.20	24
3"	PPD300	34.90	24
4"	PPD400²	68.55	8



female NPT x female coupler

type B

Size	Polypropylene		Opt Qty
	Part #	Price/E	
¾" x ½"	PPB50	\$13.25	24
¾"	PPB75	13.25	24
1"	PPB100	15.15	24
1½" x 1¼"	PPB125	18.10	24
1½"	PPB150	17.95	24
2"	PPB200	21.20	24
3"	PPB300	34.90	24
4"	PPB400²	68.55	8



male NPT x female coupler

type C

Size	Polypropylene		Opt Qty
	Part #	Price/E	
¾" x ½"	PPC50	\$13.25	24
¾"	PPC75	13.25	24
1"	PPC100	15.15	24
1½" x 1¼"	PPC125	18.10	24
1½"	PPC150	17.95	24
2"	PPC200	21.20	24
3"	PPC300	34.90	24
4"	PPC400²	68.55	8



hose shank x female coupler

type H¹

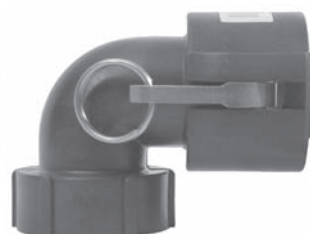
Size	Polypropylene		Opt Qty
	Part #	Price/E	
¾"	PPH75	\$12.80	24
1"	PPH100	14.70	24
1½"	PPH150	17.95	24
2"	PPH200	21.20	24
3"	PPH300	34.90	24
4"	PPH400²	49.90	8

dust cap¹**Polypropylene Coupler Elbows**

- recommended for a maximum working pressure of **100 PSI** (1½" - 2"); recommendations based on the use of mating Dixon fittings at an ambient temperature of **70°F** with standard seal installed.
- Coupler elbows are manufactured from a glass-filled polypropylene.
- Supplied with EPDM gaskets, 304 stainless steel handles and pins.
- For use at elevated temperatures or other unusual operating conditions, consult factory. **SAFETY ALERT**

FNPT x 90° Elbow

Size	Polypropylene		Opt Qty
	Part #	Price/E	
1½"	90PPD150	\$20.95	24
2"	90PPD200	24.85	24



female NPT x female coupler

Hose Shank x 90° Elbow

Size	Polypropylene		Opt Qty
	Part #	Price/E	
1½"	90PPC150	\$20.95	24
2"	90PPC200	24.85	24



hose shank x female coupler

Cam & Groove Fittings

Cam and Groove x Cam and Groove Elbows**45° Elbows****adapter x coupler**

Size	Aluminum		Stainless Steel	
	Part #	Price/E	Part #	Price/E
2"	200DA-45AL ¹	\$124.75	200DA-45SS ¹	\$465.00
3"	300DA-45AL	175.00	300DA-45SS ¹	691.90
4"	400DA-45AL	231.75	400DA-45SS ¹	922.50
6"	600DA-45AL	525.00	---	---

¹ Parts are produced as a welded fabrication.



male adapter x female coupler

coupler x coupler

Size	Aluminum		Stainless Steel	
	Part #	Price/E	Part #	Price/E
2"	200DD-45AL	\$152.90	---	---
3"	300DD-45AL	348.00	300DD-45SS	\$580.00
4"	400DD-45AL	340.00	---	---
6"	600DD-45AL	670.00	---	---

Parts are produced as a welded fabrication.



female coupler x female coupler

90° Elbows**adapter x coupler**

Size	Aluminum		Stainless Steel	
	Part #	Price/E	Part #	Price/E
1"	---	---	100DA-90SS ¹	\$333.00
1½"	150DA-90AL ¹	\$109.20	150DA-90SS ¹	355.00
2"	200DA-90AL	87.90	200DA-90SS	355.00
3"	300DA-90AL	138.00	300DA-90SS	693.00
4"	400DA-90AL	221.25	400DA-90SS	785.00
5"	500DA-90AL ¹	1397.00	---	---
6"	600DA-90AL	465.00	---	---
6"	---	---	RDA90600EZ ^{1,2}	2300.00

¹ Parts are produced as a welded fabrication.

² EZ Boss-Lock design (not pictured)



male adapter x female coupler

coupler x coupler

Size	Aluminum		Stainless Steel	
	Part #	Price/E	Part #	Price/E
2"	200DD-90AL	\$151.50	---	---
3"	300DD-90AL	334.50	300DD-90SS	\$535.00
4"	400DD-90AL	164.50	---	---
6"	600DD-90AL	750.00	---	---

Parts are produced as a welded fabrication.



female coupler x female coupler

Cam and Groove Elbows

Type A

adapter x female NPT 90° elbow



male adapter x female NPT

Size	Aluminum		Stainless Steel	
	Part #	Price/E	Part #	Price/E
1½"	150A-90AL	\$63.30	---	---
2"	200A-90AL	65.50	200A-90SS ¹	\$425.00
3"	300A-90AL	110.25	300A-90SS	440.00
4"	400A-90AL	199.00	---	---

¹ Parts are produced as a welded fabrication.

Type D

coupler x female NPT 90° elbow



female coupler x female NPT

Size	Aluminum		Brass		Stainless Steel	
	Part #	Price/E	Part #	Price/E	Part #	Price/E
1"	---	---	---	---	100D-90SS	199.40
1¼"	---	---	125D-90BR	127.00	---	---
1½"	150D-90AL	\$69.60	150D-90BR	109.70	---	---
2"	200D-90AL	63.85	200D-90BR	140.40	200D-90SS	210.00
2½"	---	---	---	---	---	---
3"	300D-90AL	90.00	---	---	300D-90SS	538.00
4"	400D-90AL	128.90	---	---	400D-90SS ¹	1015.00
4"	AD90400EZ ²	225.05	---	---	---	---
6"	600D-90AL	296.00	---	---	---	---

¹ Parts are produced as a welded fabrication.² EZ Boss-Lock design (not pictured)

Type E

adapter x hose shank 90° elbow



male adapter x hose shank

Size	Aluminum		Stainless Steel	
	Part #	Price/E	Part #	Price/E
2"	---	---	200E-90SS ¹	\$480.00
3"	300E-90AL	\$128.00	300E-90SS	544.95
4"	400E-90AL	156.75	400E-90SS ¹	882.00
6"	600E-90AL ¹	800.00	---	---

¹ Parts are produced as a welded fabrication.

Type C

coupler x hose shank 90° elbow



female coupler x hose shank

Size	Aluminum		Brass		Stainless Steel	
	Part #	Price/E	Part #	Price/E	Part #	Price/E
1¼"	---	---	125C-90BR	\$127.60	---	---
1½"	150C-90AL	\$61.10	---	---	150C-90SS	\$335.00
2"	200C-90AL	59.60	200C-90BR	138.35	200C-90SS	345.00
3"	300C-90AL	89.40	---	---	300C-90SS	534.20
4"	400C-90AL	167.95	---	---	400C-90SS ¹	914.25
6"	600C-90AL	458.65	---	---	---	---

¹ Parts are produced as a welded fabrication.

Cam and Groove Elbows

Type F

adapter x male NPT 90° elbow

Size	Aluminum		Stainless Steel	
	Part #	Price/E	Part #	Price/E
1½"	150F-90AL	\$52.70	---	---
2"	200F-90AL	81.30	200F-90SS ¹	\$395.00
3"	---	---	300F-90SS ¹	732.90

¹ Parts are produced as a welded fabrication.



male adapter x male NPT

Type B

adapter x male NPT 90° elbow

Size	Aluminum		Stainless Steel	
	Part #	Price/E	Part #	Price/E
1½"	150B-90AL	\$68.90	---	---
2"	200B-90AL	77.90	200B-90SS ¹	\$490.00
3"	---	---	300B-90SS ¹	650.00

¹ Parts are produced as a welded fabrication.



female coupler x male NPT