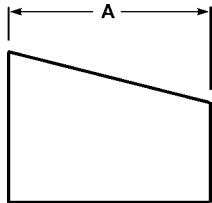
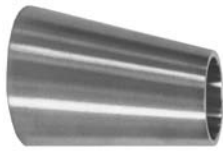


Tube OD Reducers

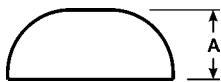
Weld Eccentric Reducers - B32W



Tube OD	Dimension A	Nominal Wall	304 Part Number	316L Part Number
3/4" x 1/2"	1.000	.065	---	B32W-R7550U
1" x 1/2"	2.000	.065	---	B32W-R10050U
1" x 3/4"	1.000	.065	---	B32W-R10075U
1 1/2" x 1/2"	4.000	.065	---	B32W-R15050U
1 1/2" x 3/4"	3.000	.065	---	B32W-R15075U
1 1/2" x 1"	2.000	.065	B32W-G150100U	B32W-R150100U
2" x 3/4"	5.000	.065	---	B32W-R20075U
2" x 1"	4.000	.065	B32W-G200100U	B32W-R200100U
2" x 1 1/2"	2.000	.065	B32W-G200150U	B32W-R200150U
2 1/2" x 2"	2.000	.065	B32W-G250200U	NEW B32W-R250200U
3" x 1 1/2"	6.000	.065	B32W-G300150U	B32W-R300150U
3" x 2"	4.000	.065	B32W-G300200U	B32W-R300200U
3" x 2 1/2"	2.000	.065	B32W-G300250U	B32W-R300250U
4" x 1 1/2"	10.000	.083	B32W-G400150U	NEW B32W-R400150U
4" x 2"	8.000	.083	B32W-G400200U	B32W-R400200U
4" x 3"	4.000	.083	B32W-G400300U	B32W-R400300U
6" x 4"	5.500	.109	B32W-G600400U	B32W-R600400U
8" x 6"	6.000	.120	B32W-G800600U	B32W-R800600U

Tube OD End Caps

Weld End Caps - B16W



Tube OD	Dimension A	304 Part Number	316L Part Number
1/2"	.250	---	B16W-R50
3/4"	.312	---	B16W-R75
1"	.375	B16W-G100	B16W-R100
1 1/2"	.562	B16W-G150	B16W-R150
2"	.750	B16W-G200	B16W-R200
2 1/2"	1.000	B16W-G250	B16W-R250
3"	1.250	B16W-G300	B16W-R300
4"	1.500	B16W-G400	B16W-R400
6"	2.000	B16W-G600	B16W-R600
8"	2.500	NEW B16W-G800	B16W-R800