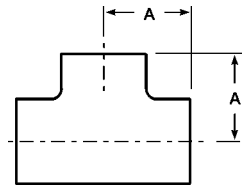


Buttweld Tees

Buttweld Short Tees, #7 finish - *B7WWW*

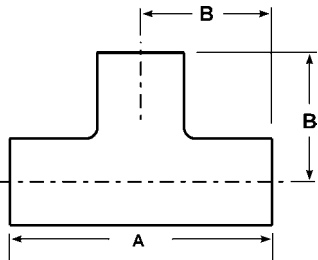



Tube OD	Dimension A	Nominal Wall	304 Part Number	316L Part Number
1"	1.125	.065	B7WWW-G100P	B7WWW-R100P
1½"	1.656	.065	B7WWW-G150P	B7WWW-R150P
2"	2.062	.065	B7WWW-G200P	B7WWW-R200P
2½"	2.344	.065	B7WWW-G250P	B7WWW-R250P
3"	2.594	.065	B7WWW-G300P	B7WWW-R300P
4"	3.438	.083	B7WWW-G400P	B7WWW-R400P

Note: #3, #5 and electropolish finishes are available.

H

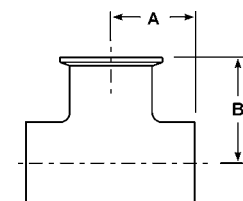
Buttweld Long Tees, #7 finish - *B7W*





Tube OD	Dimensions A	B	Nominal Wall	304 Part Number	316L Part Number
½"	3.750	1.875	.065	---	B7W-R50P
¾"	4.000	2.000	.065	---	B7W-R75P
1"	3.750	1.875	.065	B7W-G100P	B7W-R100P
1½"	4.500	2.250	.065	B7W-G150P	B7W-R150P
2"	6.000	3.000	.065	B7W-G200P	B7W-R200P
2½"	6.000	3.000	.065	B7W-G250P	B7W-R250P
3"	6.500	3.250	.065	B7W-G300P	B7W-R300P
4"	7.750	3.875	.083	B7W-G400P	B7W-R400P
6"	11.250	5.625	.109	B7W-G600P	 B7W-R600P
8"	14.000	7.000	.120	B7W-G800P	B7W-R800P

Note: #3, #5 and electropolish finishes are available.



Buttweld Run x Clamp Branch Tees, #7 finish - *B7WWM*

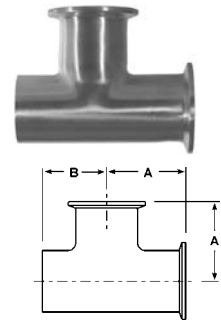


Tube OD	Dimensions A	B	Nominal Wall	304 Part Number
1"	1.125	1.625	.065	 B7WWM-G100
1½"	1.656	2.156	.065	B7WWM-G150
2"	2.062	2.562	.065	B7WWM-G200
2½"	2.344	2.844	.065	 B7WWM-G250
3"	2.594	3.094	.065	B7WWM-G300
4"	3.438	4.063	.083	B7WWM-G400




Buttweld Tees

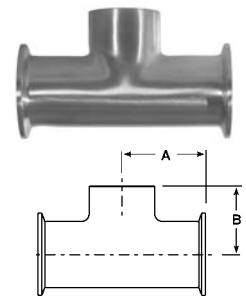
Buttweld x Clamp Run x Clamp Branch Tees, #7 finish - *B7WMM*

Tube OD	Dimensions		Nominal Wall	304	
	A	B		Part Number	
1"	1.625	1.125	.065	B7WMM-G100	
1½"	2.156	1.656	.065	B7WMM-G150	
2"	2.562	2.062	.065	B7WMM-G200	
2½"	2.844	2.344	.065	B7WMM-G250	
3"	3.094	2.594	.065	B7WMM-G300	
4"	3.438	4.062	.065	B7WMM-G400	



Clamp Runs x Buttweld Branch Tees, #7 finish - *B7MMW*

Tube OD	Dimensions		Nominal Wall	304	
	A	B		Part Number	
1"	1.625	1.125	.065	B7MMW-G100	
1½"	2.156	1.656	.065	B7MMW-G150	
2"	2.562	2.062	.065	B7MMW-G200	
2½"	2.844	2.062	.065	B4MMW-G250	
3"	3.094	2.594	.065	B7MMW-G300	
4"	4.062	3.438	.065	B7MMW-G400	



Other types of Buttweld Tees are available call Dixon Sanitary for information



B7WTT



B7TTW



B7WTW



B7WWT

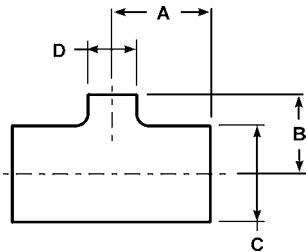


B7MMW

Butt Weld Tees



Butt Weld Reducing Tees, #7 finish - B7RWWW



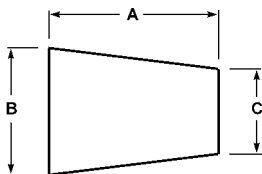
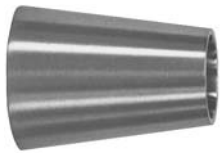
Tube OD	Dimensions				Nom. Wall	304	316L
	A	B	C	D		Part Number	Part Number
¾" x ½"	2.000	2.000	.750	.500	.065	---	B7RWWW-R7550P
1" x ½"	2.125	2.125	1.000	.500	.065	---	B7RWWW-R10050P
1" x ¾"	2.125	2.125	1.000	.750	.065	---	B7RWWW-R10075P
1½" x ½"	2.375	2.375	1.500	.500	.065	---	B7RWWW-R15050P
1½" x ¾"	2.375	2.375	1.500	.750	.065	---	B7RWWW-R15075P
1½" x 1"	1.656	1.375	1.500	1.000	.065	B7RWWW-G150100P	B7RWWW-R150100P
2" x ½"	2.875	2.625	2.000	.500	.065	---	B7RWWW-R20050P
2" x ¾"	2.875	2.625	2.000	.750	.065	---	B7RWWW-R20075P
2" x 1"	2.062	1.625	2.000	1.000	.065	B7RWWW-G200100P	B7RWWW-R200100P
2" x 1½"	2.062	1.906	2.000	1.500	.065	B7RWWW-G200150P	B7RWWW-R200150P
2½" x 1½"	2.344	2.156	2.500	1.500	.065	B7RWWW-G250150P	B7RWWW-R250150P
2½" x 2"	2.344	2.312	2.500	2.000	.065	B7RWWW-G250200P	B7RWWW-R250200P
3" x 1½"	2.594	2.406	3.000	1.500	.065	B7RWWW-G300150P	B7RWWW-R300150P
3" x 2"	2.594	2.562	3.000	2.000	.065	B7RWWW-G300200P	B7RWWW-R300200P
3" x 2½"	2.594	2.594	3.000	2.500	.083	B7RWWW-G300250P	B7RWWW-R300250P
4" x 1½"	3.438	2.906	4.000	1.500	.083	B7RWWW-G400150P	B7RWWW-R400150P
4" x 2"	3.438	3.062	4.000	2.000	.083	B7RWWW-G400200P	B7RWWW-R400200P
4" x 2½"	3.438	3.094	4.000	2.500	.083	B7RWWW-G400250P	B7RWWW-R400250P
4" x 3"	3.438	3.094	4.000	3.000	.083	B7RWWW-G400300P	B7RWWW-R400300P
6" x 2"	5.625	4.500	6.000	2.000	.109	B7RWWW-G600200P	B7RWWW-R600200P
6" x 3"	5.625	4.875	6.000	3.000	.109	B7RWWW-G600300P	B7RWWW-R600300P
6" x 4"	5.625	5.125	6.000	4.000	.109	B7RWWW-G600400P	B7RWWW-R600400P

Note: #3, #5 and electropolish finishes are available.

Butt Weld Reducers



Butt Weld Concentric Reducers, #7 finish - B31W



Tube OD	Dimensions			Nom. Wall	304	316L
	A	B	C		Part Number	Part Number
¾" x ½"	1.000	.750	.500	.065	---	B31W-R7550P
1" x ½"	2.000	1.000	.500	.065	---	B31W-R10050P
1" x ¾"	1.000	1.000	.750	.065	---	B31W-R10075P
1½" x ½"	4.000	1.500	.500	.065	---	B31W-R15050P
1½" x ¾"	3.000	1.500	.750	.065	---	B31W-R15075P
1½" x 1"	2.000	1.500	1.000	.065	B31W-G150100P	B31W-R150100P
2" x ½"	6.000	2.000	.500	.065	---	B31W-R20050P
2" x ¾"	5.000	2.000	.750	.065	---	B31W-R20075P
2" x 1"	4.000	2.000	1.000	.065	B31W-G200100P	B31W-R200100P
2" x 1½"	2.000	2.000	1.500	.065	B31W-G200150P	B31W-R200150P
2½" x 1½"	4.000	2.500	1.500	.065	B31W-G250150P	B31W-R250150P
2½" x 2"	2.000	2.500	2.000	.065	B31W-G250200P	B31W-R250200P
3" x 1"	8.000	3.000	1.000	.065	B31W-G300100P	B31W-R300100P
3" x 1½"	6.000	3.000	1.500	.065	B31W-G300150P	B31W-R300150P
3" x 2"	4.000	3.000	2.000	.065	B31W-G300200P	B31W-R300200P
3" x 2½"	2.000	3.000	2.500	.065	B31W-G300250P	B31W-R300250P
4" x 1½"	10.000	4.000	1.500	.083	B31W-G400150P	B31W-R400150P
4" x 2"	8.000	4.000	2.000	.083	B31W-G400200P	B31W-R400200P
4" x 2½"	6.000	4.000	2.500	.083	B31W-G400250P	B31W-R400250P
4" x 3"	4.000	4.000	3.000	.083	B31W-G400300P	B31W-R400300P
6" x 2"	5.500	6.000	2.000	.109	B31W-G600200P	B31W-R600200P
6" x 3"	5.500	6.000	3.000	.109	B31W-G600300P	B31W-R600300P
6" x 4"	5.500	6.000	4.000	.109	B31W-G600400P	B31W-R600400P
8" x 4"	6.000	8.000	4.000	.120	B31W-G800400P	B31W-R800400P
8" x 6"	6.000	8.000	6.000	.120	B31W-G800600P	B31W-R800600P

Note: #3, #5 and electropolish finishes are available.